
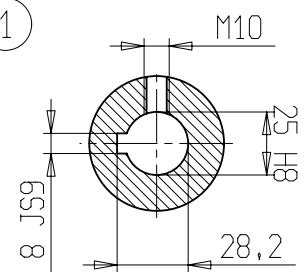
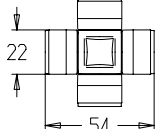
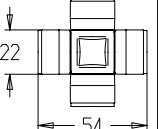
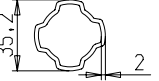
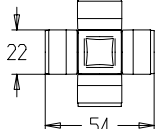
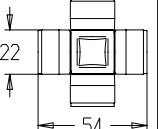




WARNING!

SECTIONS  OF THE ASSEMBLY ARE NOT SHIELDED AND MUST BE SHIELDED BY AN INTERACTIVE GUARDING SYSTEM. BONDIOLI & PAVESI DECLINES RESPONSIBILITY IF PROPER GUARDS ARE NOT PROVIDED OR MAINTAINED.



1	CODICE CODE 053	LATO TRATTORE TRACTOR SIDE	LATO MACCHINA IMPLEMENT SIDE	TIPO-TYPE SFT-S1	CLIENTE / CUSTOMER 3600502 DANI-TECH A/S	RIF. CLIENTE / CUSTOMER REF.	
2	CODICE CODE 505012751			DATA / DATE 6/3/08	DISIGNATO / DESIGNED BY R. Moretti	TIPO DI MACCHINA / TYPE OF IMPLEMENT	
3	 L=250			LUNGHEZZA MAX IN LAVORO MAX WORKING LENGTH Lw=431	STUDIO / DESIGN TRS1N036003	ORIGINE / ORIGIN DS1N032FX053001	
4	 L=260	VELOCITA' MAX MAX SPEED 540 min ⁻¹	M max 850 Nm	LUNGHEZZA MAX TEMPORANEA MAX TEMPORARY LENGTH Lt=481	NOTE / NOTES SPEC.PER: POS.1; POS.2; LUNGHEZZA		
				LUNGHEZZA MAX NON IN ROTAZIONE MAX LENGTH AT STANDSTILL Ls=514			